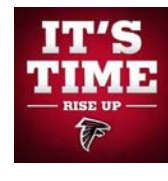


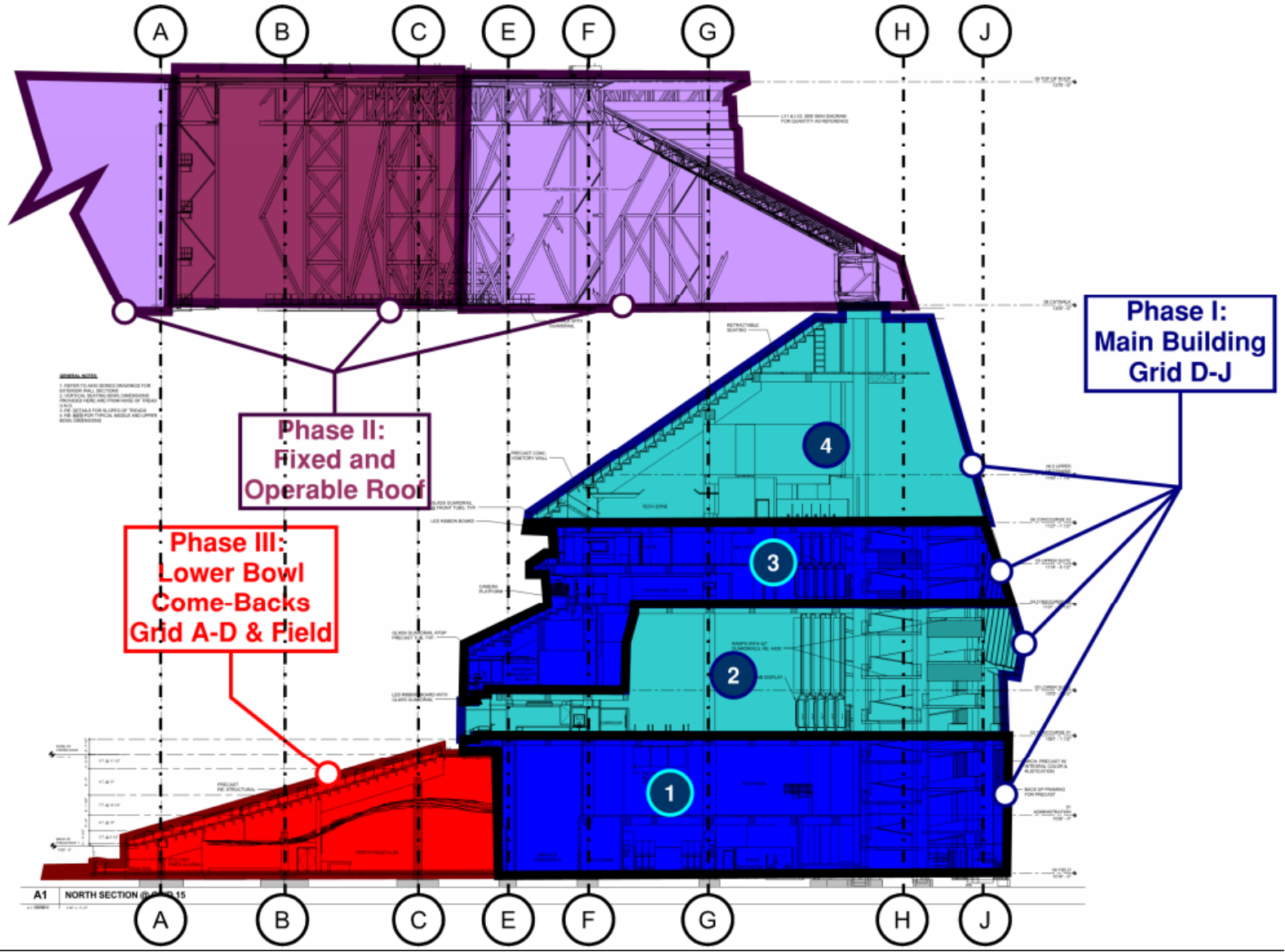
# MERCEDES-BENZ STADIUM



MARCH 2014



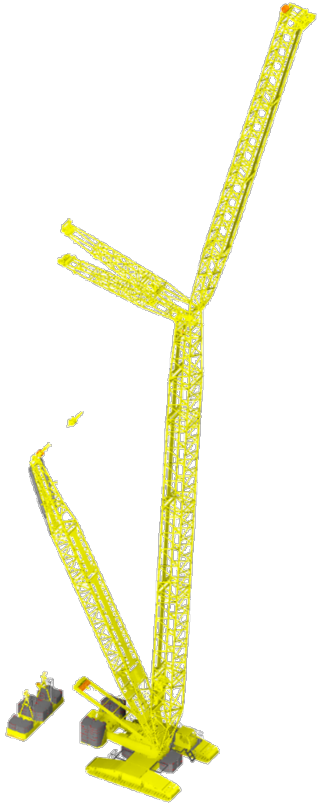




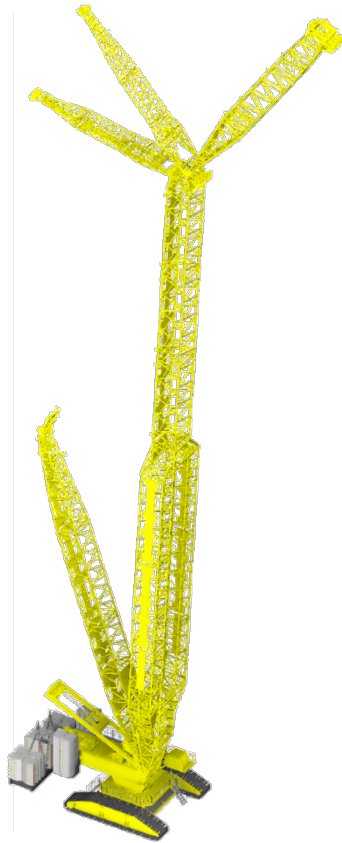
# Hoisting Plan



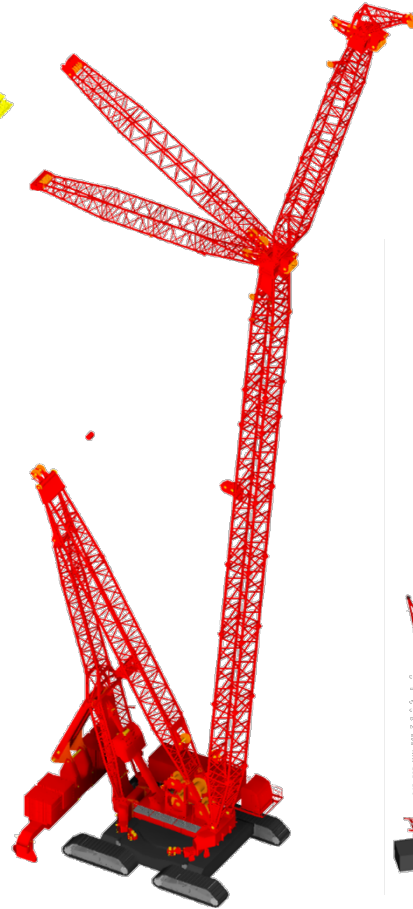
LIEBHERR 1400  
STEEL



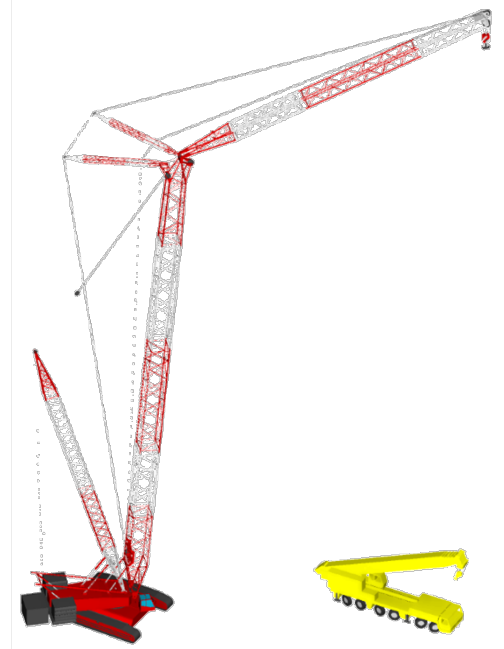
LIEBHERR 1600  
STEEL



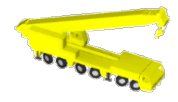
LIEBHERR 11000  
STEEL



MANITOWOC 31000  
STEEL



MAMMOET  
FACADE

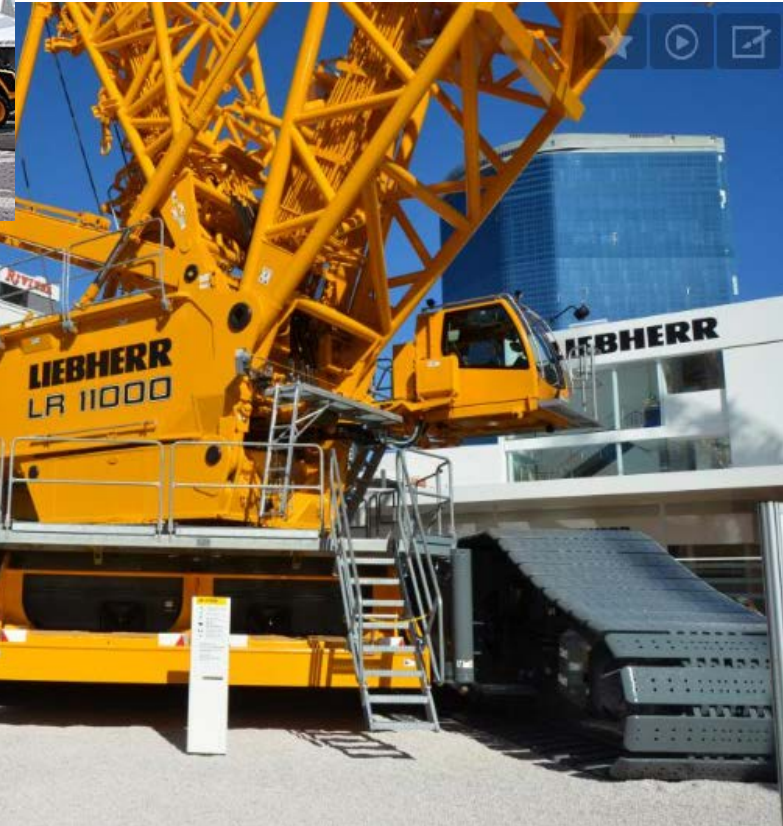
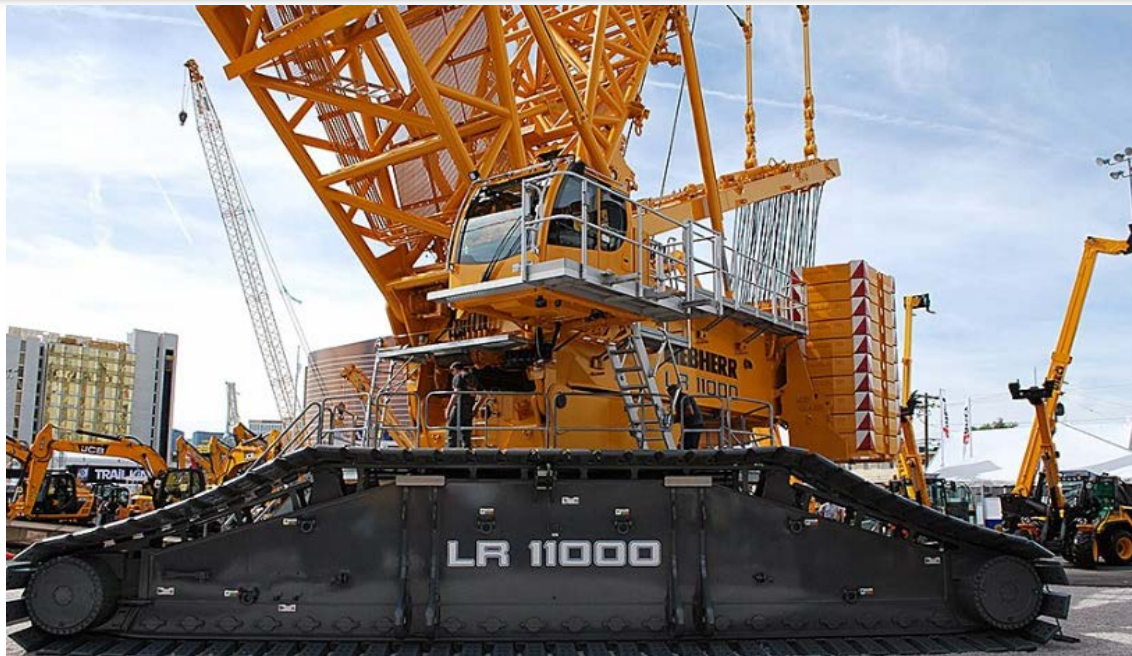


150T HYDRAULIC  
PLAZA

# Liebherr LR11000

## Liebherr Crawler Crane LR 11000

- 1,250 Ton Capacity

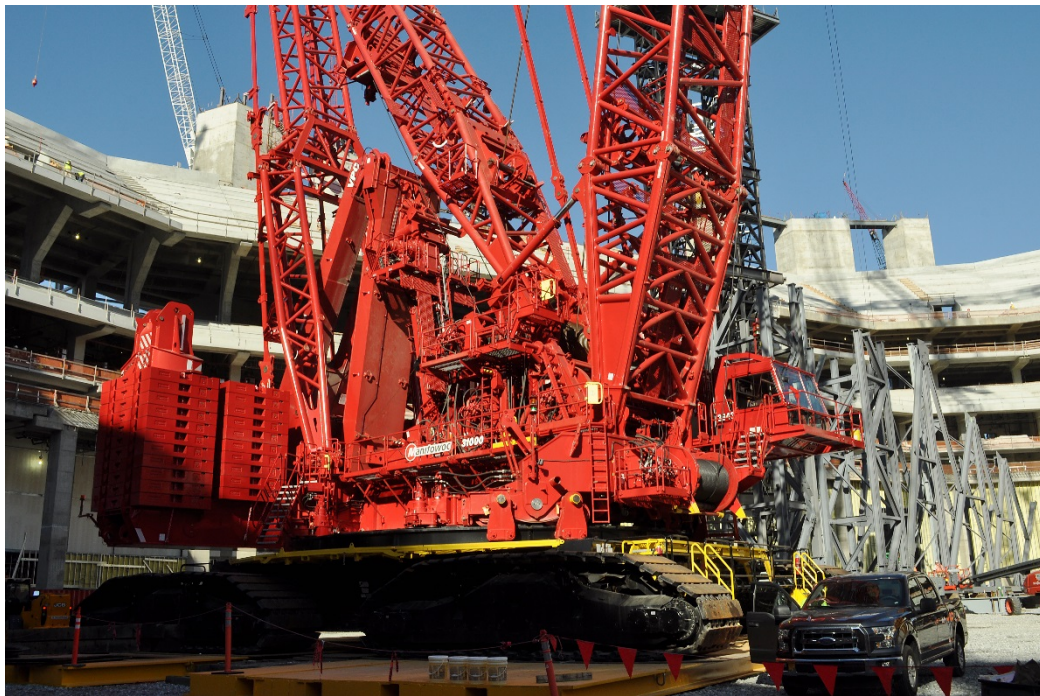


# Manitowoc 31000



## Manitowoc 31000

- 2,300 Ton Capacity

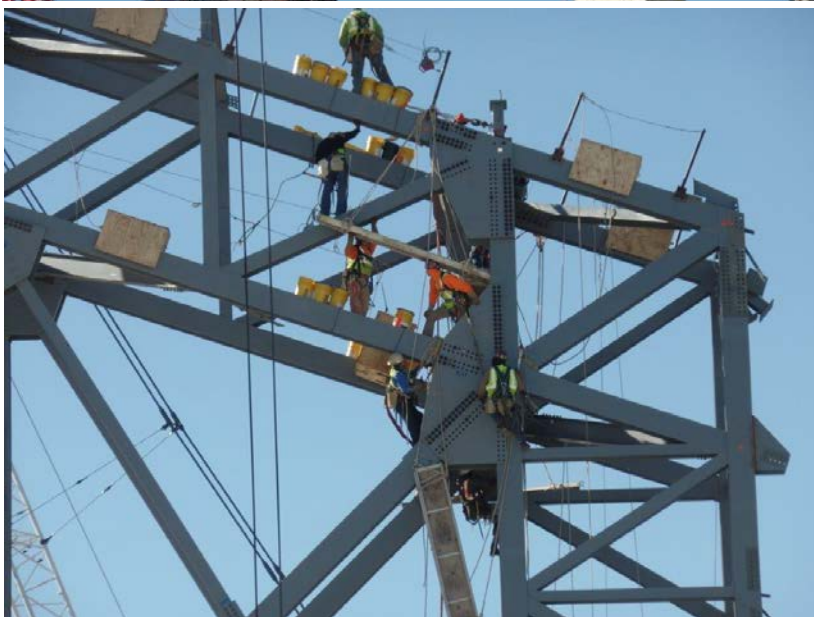


# Manitowoc 31000

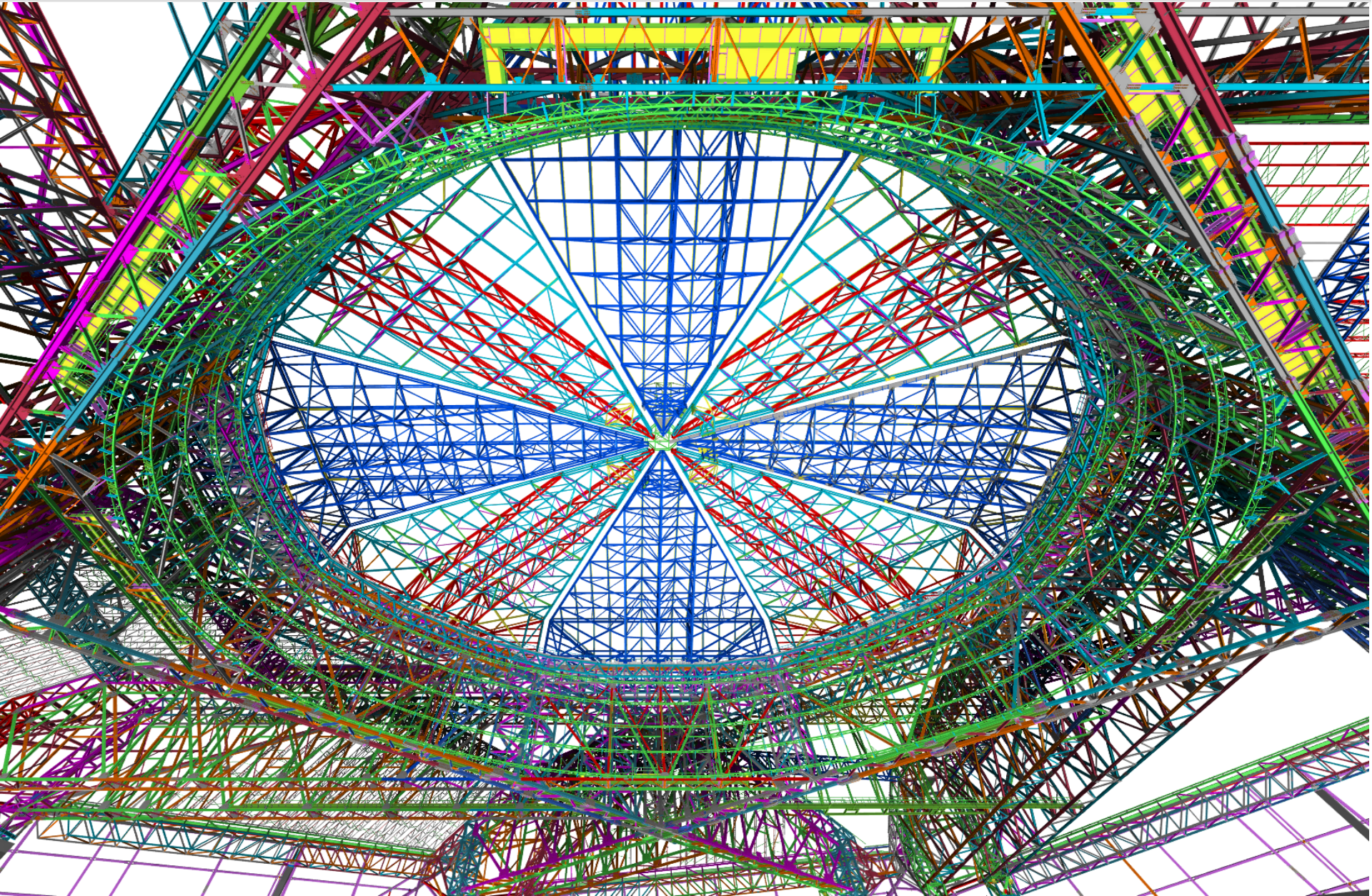




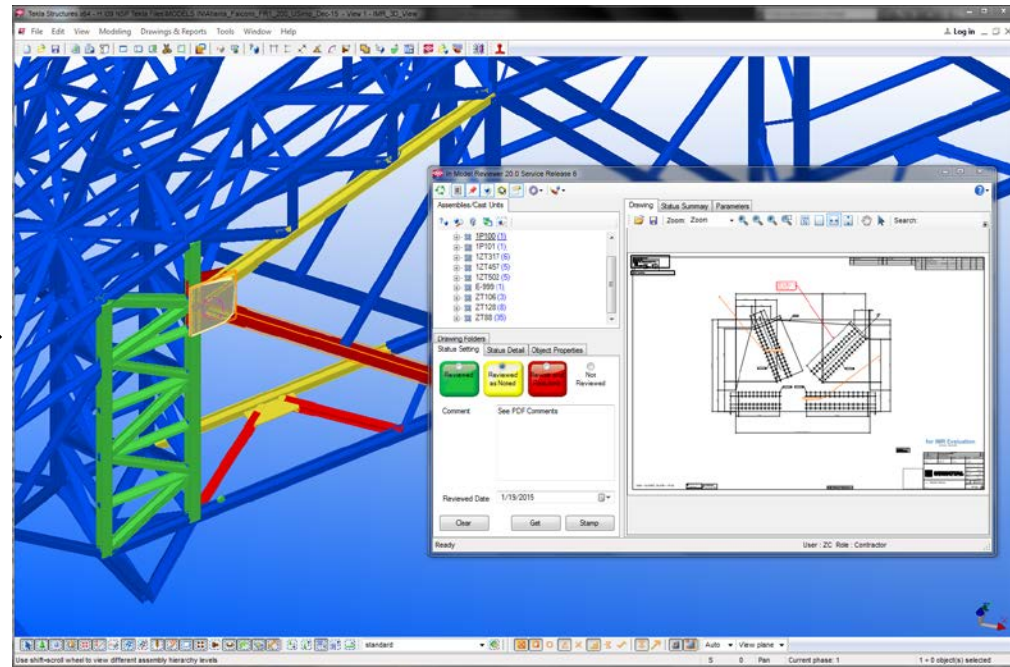
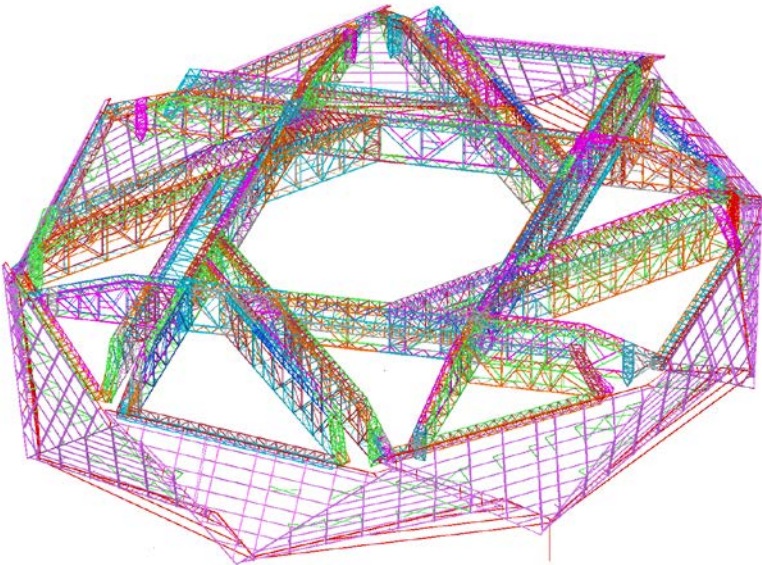
# Manitowoc 31000



# Halo and Petals from below



# Tekla 3D Coordination



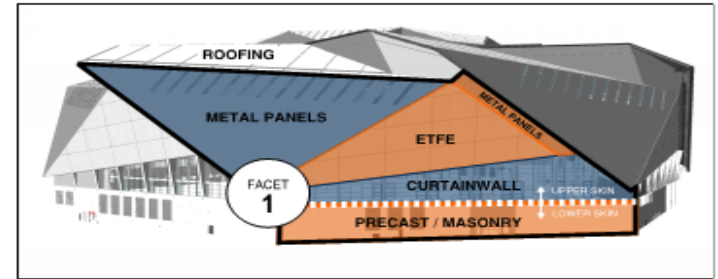
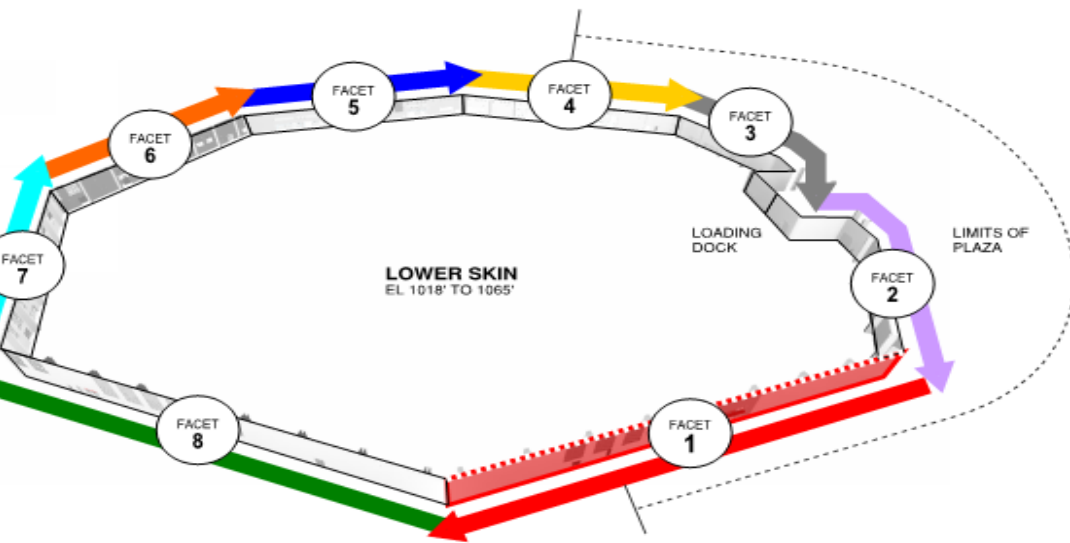
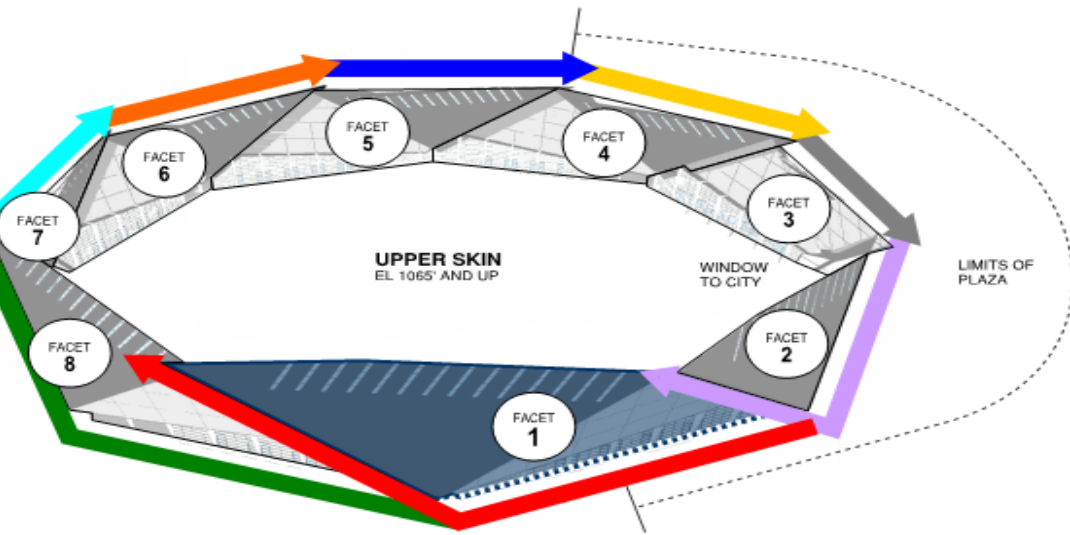
# Sample Node



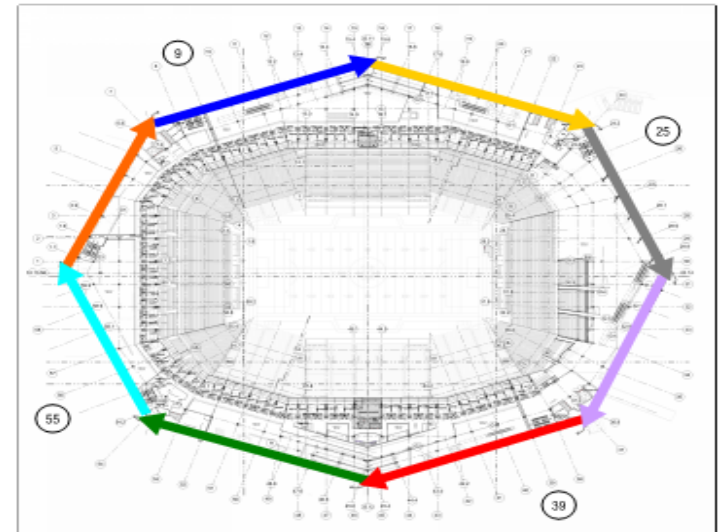
# Division 213 Z Assembly



# Exterior Facade



TYPICAL FACET MATERIALS



PLAN VIEW



# Bridge Work



## MLK Bridge Milestones:

**Steel Girder Install Complete: February 2016**

**Concrete Flat Work Complete: May 2016**

**Bridge Substantial Completion: August 2016**

# Georgia Dome Demolition

- Prequalification complete March 31, 2016
- Bid Process April 1, 2016 through August, 2016

